

81300001

D.W/G No.

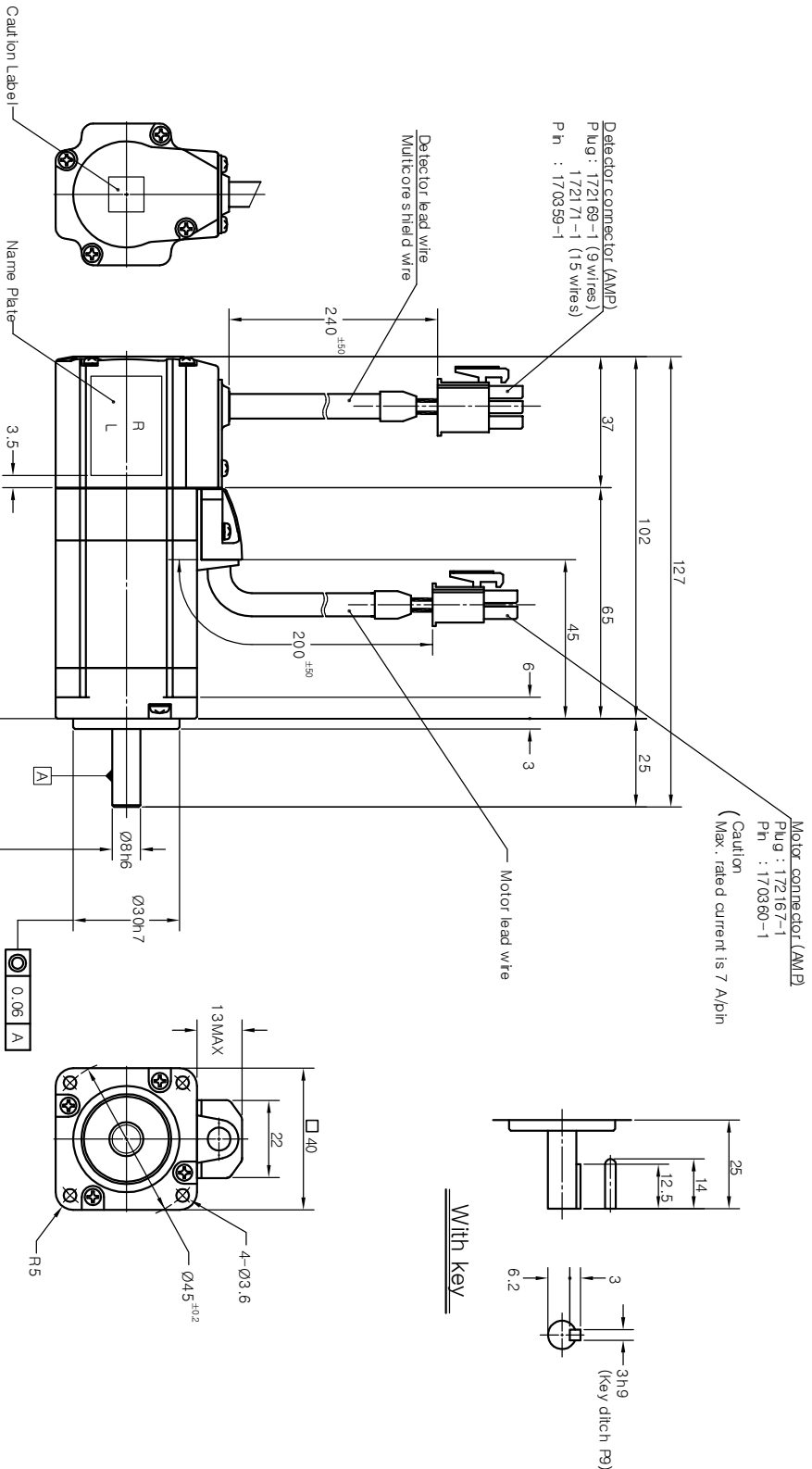
AMENDMENT	DATE
SIGN	DESCRIPTION
MODIFIER	APPROVALS

Opponent connector (No belongings)

- Motor connector (AMP)
- Cap : 172159-1
- Socket : 170362-1
- or 170366-1
- Detector connector (AMP)
- Cap : 172161-1 (9 wires)
- Socket : 170361-1 (15 wires)
- or 170365-1

Rotary encoder unit

Pin No	Inc. (17 bit)	Abs. (17 bit)
1	A	BAT+
2	A	BAT-
3	B	FG
4	B	SD
5	Z	Z
6	Z	Z
7	DC +5V	DC +5V
8	GND	0V
9	FG	V
10	V	V
11	W	W
12	W	W
13	DC +5V	DC +5V
14	GND	GND
15	FG	FG



A

B

C

D

1

2

3

4

5

6

ORIGINAL	ALT IN NATIVE MATERIAL	ITEM	PART NAME	QTY	PART NO.	DWG NO.
TOLERANCE	ANGLE	PART LISTS				
LINEAR	—	KOMOTEK CO., LTD.				
±0.5	—	OUTLINE DRAWING				
MATERIAL	—	(KANZ-A8000ND)				
HEAT TREATMENT	—	DWG SIZE A2				
FINISH	—	DWG No. 10000318				

NEXT ASSY	USED ON	ISSUING DIVISION	Mechanical Design Team
P/N	SC KANZ-A8000ND	SCALE	1/1 UNIT mm
DESIGNED	Kwon tmi Young	DATE	2002.12.16
CHECKED	Choi Sang Uk	3rd Angle System	
APPROVED			

1

2

3

4

5

6