

PIN No.	Signal
1	U
2	V
3	W
4	G

Opponent connector (No belongings)

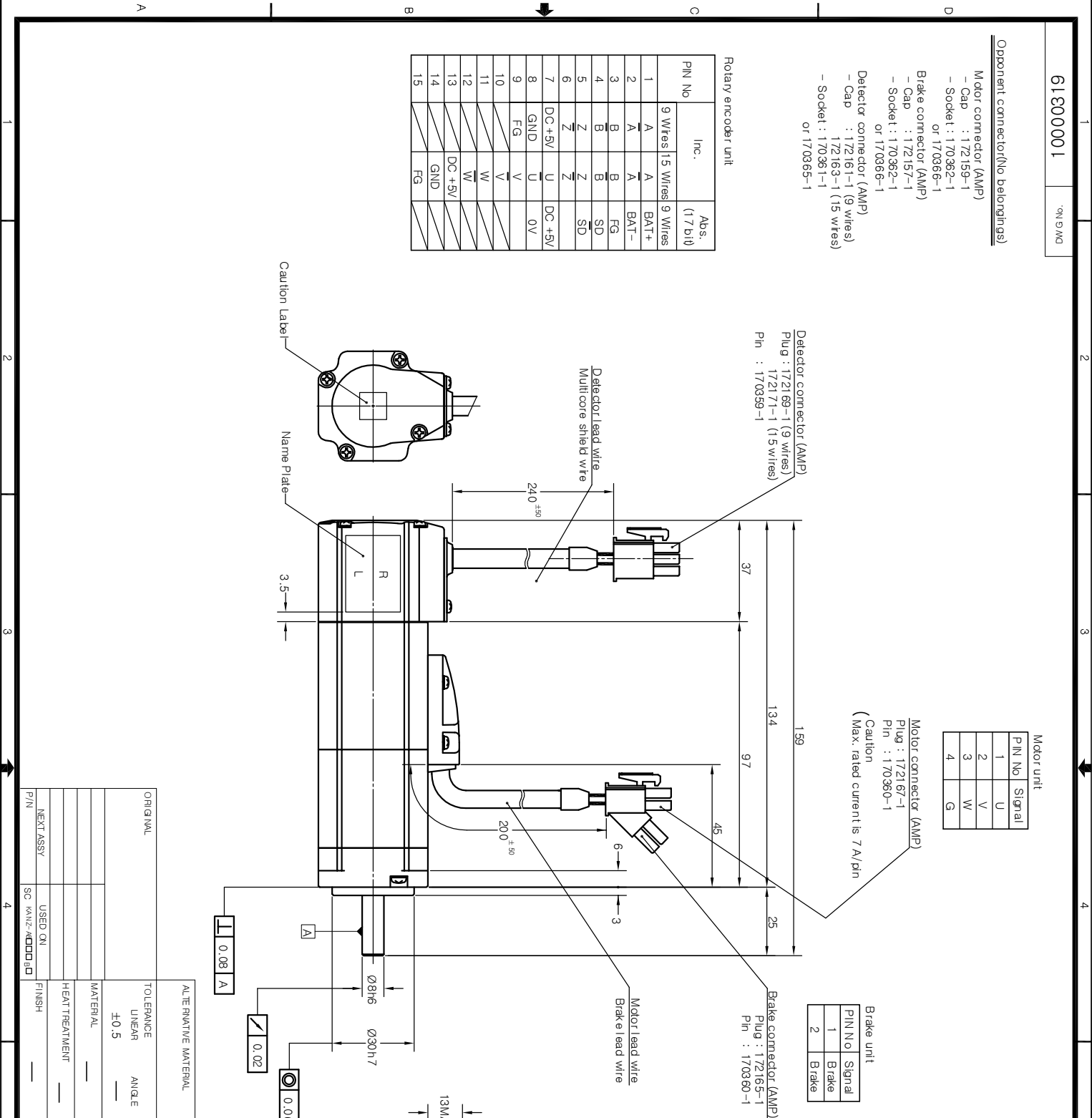
Motor connector (AMP)
 - Cap : 172159-1
 - Socket : 170362-1
 or 170366-1

Brake connector (AMP)
 - Cap : 172157-1
 - Socket : 170362-1
 or 170366-1

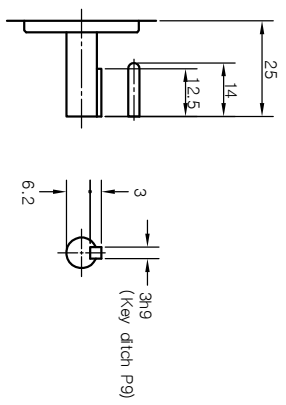
Detector connector (AMP)
 - Cap : 172161-1 (9 wires)
 172163-1 (15 wires)
 - Socket : 170361-1
 or 170365-1

Rotary encoder unit

PIN No.	Inc.	Abs. (17 bit)
1	A	BAT+
2	A	BAT-
3	B	FG
4	B	SD
5	Z	Z
6	Z	Z
7	DC+5V	DC+5V
8	GND	0V
9	FG	V
10	V	V
11	W	W
12	W	W
13	DC+5V	DC+5V
14	GND	GND
15	FG	FG



SIGI	DESCRIPTION	MODIFIER	APPROVALS	DATE



With key

PART LISTS

ITEM PART NAME QTY PART NO. DWG No.

2002.12.16

3rd Angle System

Approved Cho SANDA UK

Checked Drawn Designer Kiwon mlyoung

ISSUING DIVISION Mechanical Design Team

SCALE 1/1 UNIT mm

ORIGINAL	TOLERANCE LINEAR	ANGLE
	±0.5	
	MATERIAL	
	HEAT TREATMENT	
	FINISH	
P/N	USED ON	
NEXT ASSY	SC KANZ-KOOD	

ALTERNATIVE MATERIAL	ITEM	PART NAME	QTY	PART NO.	DWG No.

2002.12.16	3rd Angle System	Approved	Cho SANDA UK
Checked	Drawn	Designer	Kiwon mlyoung
ISSUING DIVISION	Mechanical Design Team	DWG SIZE	DWG No. 10000319
SCALE	1/1 UNIT mm	SHEET	1 OF 1

OUTLINE DRAWING (KANZ-A8000B D)