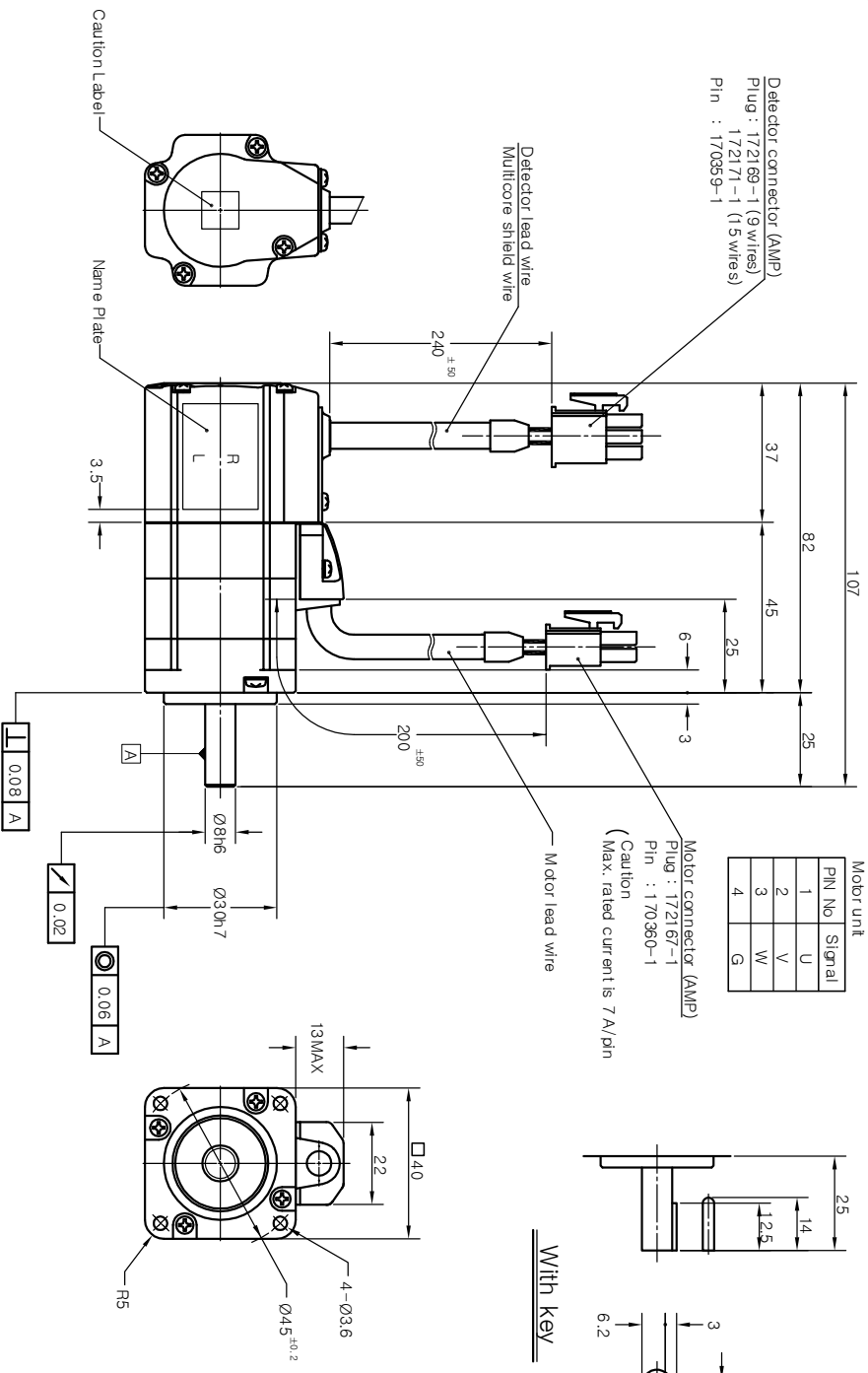


SIGN	DESCRIPTION	MODIFIER	APPROVALS	DATE

Opponent connector (No belonging)

- Motor connector (AMP)
 - Cap : 172159-1
 - Socket : 170362-1
 or 170365-1
- Detector connector (AMP)
 - Cap : 172161-1 (9 wires)
 172163-1 (15 wires)
 - Socket : 170361-1
 or 170365-1

Pin No	Inc.	Abs. (17 bit)
1	A	BAT+
2	A	BAT-
3	B	FG
4	B	SD
5	Z	Z
6	Z	Z
7	DC+5V	DC+5V
8	GND	0V
9	FG	V
10	V	V
11	W	W
12	W	W
13	DC+5V	DC+5V
14	GND	GND
15	FG	FG



Motor unit

PIN No	Signal
1	U
2	V
3	W
4	G

Motor connector (AMP)
 Plug : 172167-1
 Pin : 170360-1
 (Caution
 Max. rated current is 7 A/pin)

With key

ORIGINAL		ALTERNATIVE MATERIAL		ITEM	PART NAME	QTY	PART NO.	DWG No.
TOLERANCE LINEAR ± 0.5		ANGLE		PART LISTS				
MATERIAL		HEAT TREATMENT		KOMOTEK CO., LTD.				
FINISH		FINISH		OUTLINE DRAWING				
NEXT ASSY		USED ON		DWG SIZE A2				
SC KANZ-40000		SC KANZ-40000		DWG No. 10000302				
SCALE 1/1 UNIT mm		SCALE 1/1 UNIT mm		SHEET 1 OF 1				
2002.12.16		3rd Angle System		DESIGNED BY Kwon mi Young				
Checked Oho Sang UK		Drawn		ISSUING DIVISION Mechanical Design Team				
Approved		Design		DWG No. 10000302				
2002.12.16		3rd Angle System		SHEET 1 OF 1				