

00300001

DWG No.

AMENDMENT			
SIGI	DESCRIPTION	MODIFIER	APPROVALS
			DATE

Opponent connector(N/o belongings)

Motor connector (AMP)

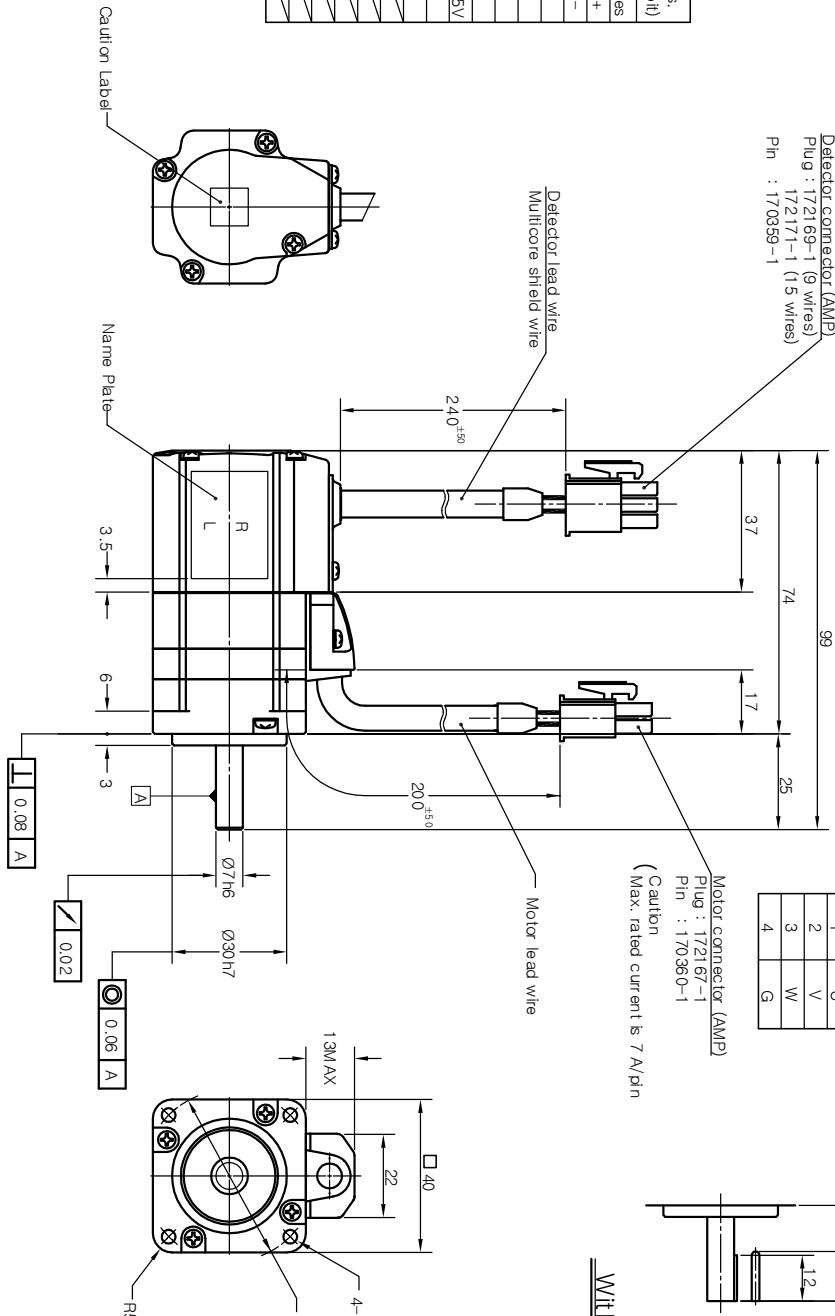
- Cap : 172159-1
- Socket : 170362-1
- or 170366-1

Detector connector (AMP)

- Cap : 172161-1 (9 wires)
- 172163-1 (15 wires)
- Socket : 170361-1
- or 170365-1

Rotary encoder unit

Pin No	Inc.	Abs. (17 bit)
1	A	BAT+
2	A	BAT-
3	B	FG
4	B	SD
5	Z	Z
6	Z	Z
7	DC +5V	DC+5V
8	GND	0V
9	FG	V
10	W	W
11	W	W
12	DC +5V	DC+5V
13	GND	GND
14	GND	FG
15	FG	



Motor unit

P/N No	Signal
1	V
2	W
3	W
4	G

Motor connector (AMP)
 Plug : 172167-1
 Pin : 170360-1
 (Caution
 Max. rated current is 7 A/pin)

With key

A

B

C

D

1

2

3

4

5

6

ORIGINAL	
NEXT ASSY	
USED ON	
SC KANZ-A3000ND	

ALTERNATIVE MATERIAL	
TOLERANCE	ANGLE
LINEAR	
±0.5	
MATERIAL	HEAT TREATMENT
	FINISH

ITEM	PART NAME	QTY	PART No.	DWG No.
PART LISTS				
2002.12.16				
3rd Angle System				
Approved Choo Sang UK				
Checked				
Drawn				
Designed Kwon mi Young				
ISSUING DIVISION Mechanical Design Team				
SCALE 1/1 UNIT mm				
DWG SIZE A2				
DWG No. 10000300				
SHEET 1 OF 1				

KOMOTEK CO., LTD.

OUTLINE DRAWING (KANZ-A3000ND)