

41300001

REV. G.W.C

Opponent connector (No belongings)

- Motor connector (AMP)
 - Cap : 172159-1
 - Socket : 170362-1
 or 170366-1
- Brake connector (AMP)
 - Cap : 172157-1
 - Socket : 170362-1
 or 170366-1
- Detector connector (AMP)
 - Cap : 172169-1 (9 wires)
 - Socket : 172161-1 (15 wires)
 or 170365-1

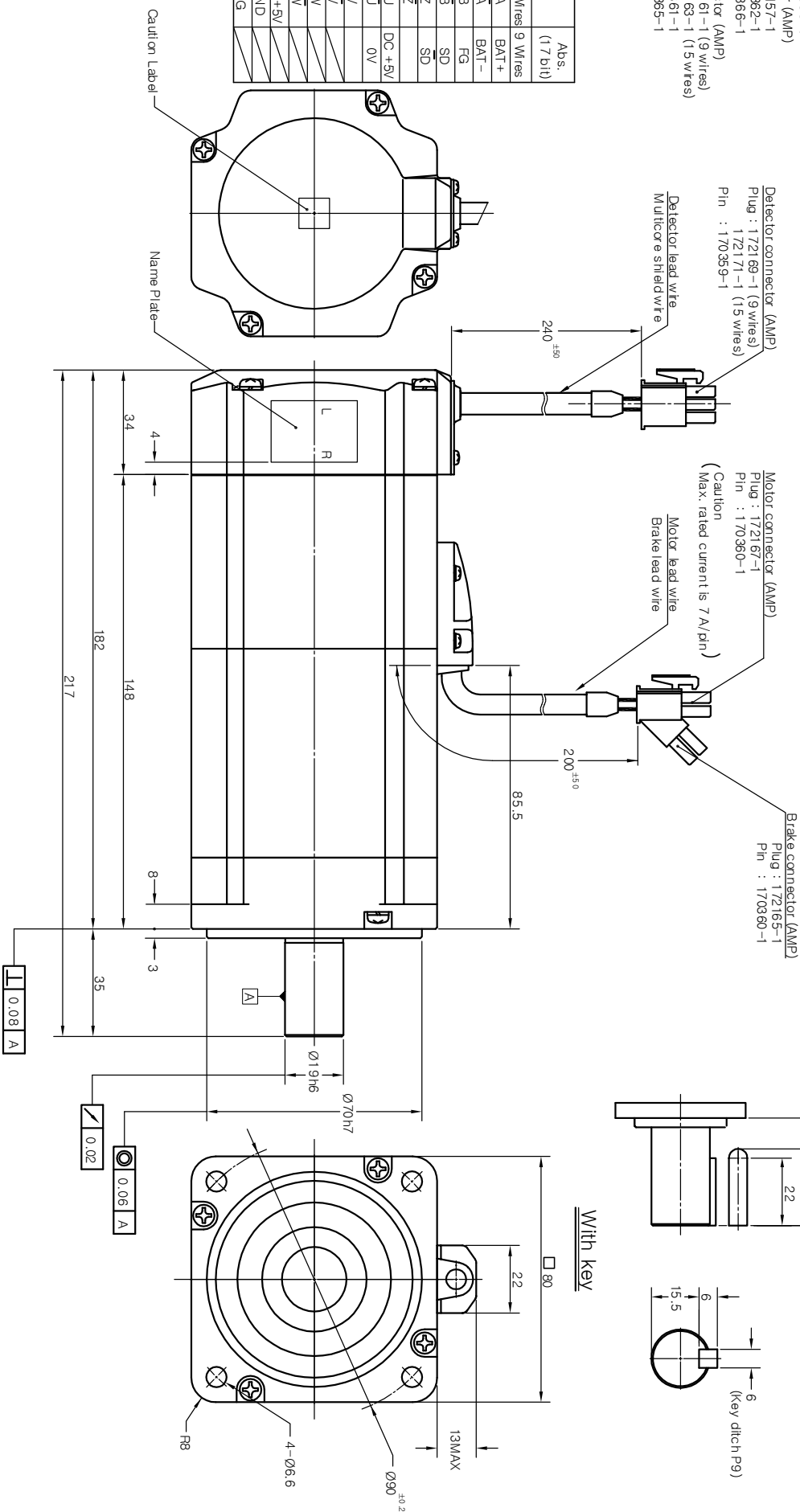
Motor unit	
PIN No.	Signal
1	U
2	V
3	W
4	G

Brake unit	
PIN No.	Signal
1	Brake
2	Brake

AMENDMENT			
SIGL	DESCRIPTION	MODIFIER	APPROVALS
			DATE

Rotary encoder unit

PIN No	Inc.	Abs.
1	9 Wires	1.5 Wires
2	A	A
3	B	B
4	B	B
5	Z	Z
6	Z	Z
7	DC +5V	DC +5V
8	GND	0V
9	FG	V
10	V	V
11	W	W
12	W	W
13	DC +5V	DC +5V
14	GND	GND
15	FG	FG



A

B

C

D

1

2

3

4

5

6

ORIGINAL	ALTERNATIVE MATERIAL	ITEM	PART NAME	QTY	PART No.	DWG.No.

TOLERANCE	ANGLE	2002.12.16
LINEAR		3rd Angle System
± 0.5		Approved
		Checked
		Drawn
		Designed
		ISSUING DIVISION
		Mechanical Design Team
		SCALE 1/1 UNIT mm
		WT.

HEAT TREATMENT	FINISH	FINISH

NEXT ASSY	USED ON

SCALE	UNIT	WT.

DWG SIZE	DWG No.
A2	10000317

SHEET	OF
1	1

PART NAME
KOMOTEK CO., LTD.

OUTLINE DRAWING
(KANZ-080000B D)

SCALE
1/1 UNIT mm

WT.

DWG No.
10000317

SHEET
1

OF
1

1

2

3

4

5

6