

50300001

DWG No.

Opponent connector (No belongings)

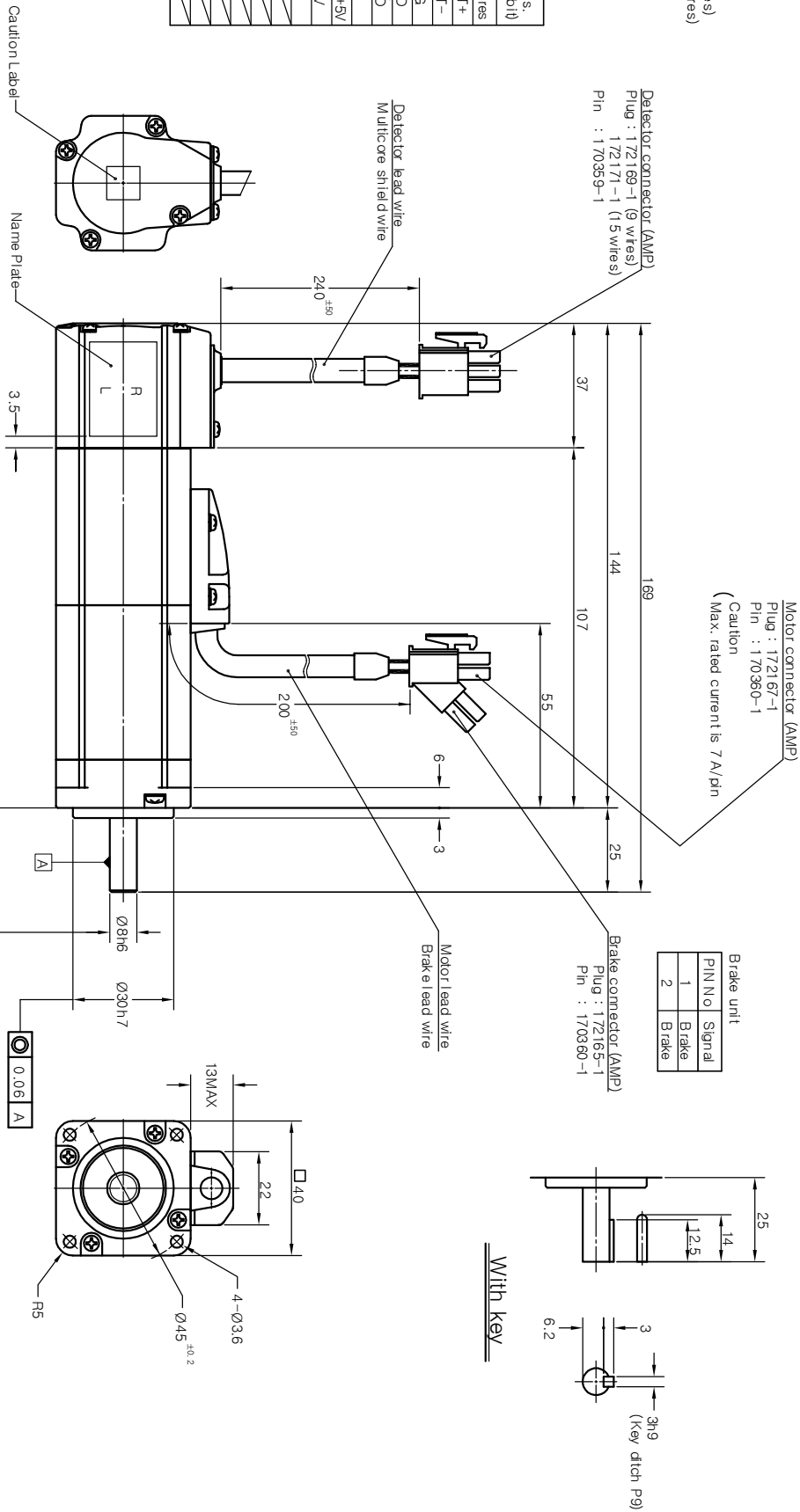
- Motor connector (AMP)
- Cap : 172159-1
 - Socket : 170362-1 or 170366-1
- Brake connector (AMP)
- Cap : 172157-1
 - Socket : 170362-1 or 170366-1
- Detector connector (AMP)
- Cap : 172161-1 (9 wires)
 - 172163-1 (15 wires)
 - Socket : 170361-1 or 170365-1

Motor unit	
PIN No.	Signal
1	U
2	V
3	W
4	G

Brake unit	
PIN No.	Signal
1	Brake
2	Brake

Rotary encoder unit

PIN No.	Inc.		Abs. (17 bit)
	9 Wires	15 Wires	
1	A	A	BAT+
2	A	A	BAT-
3	B	B	FG
4	B	B	SD
5	Z	Z	SD
6	Z	Z	SD
7	DC+5V	U	DC+5V
8	GND	U	0V
9	FG	V	V
10	FG	V	V
11	W	W	W
12	W	W	W
13	DC+5V	W	DC+5V
14	GND	W	GND
15	FG	W	FG



AMENDMENT			
SIGN	DESCRIPTION	MODIFIER	APPROVALS
			DATE

ORIGINAL	
NEXT ASSY	
USED ON	
FINISH	

ALTERNATIVE MATERIAL	
TOLERANCE	
LINEAR	±0.5
ANGLE	
MATERIAL	
HEAT TREATMENT	
FINISH	

ITEM	PART NAME	QTY	PART No.	DWG No.
PART LISTS				
KOMOTEK CO., LTD.				

2002.12.16
3rd Angle System
Approved
Checked
Drawn
Designed
Issuing Division
Mechanical Design Team
SCALE 1/1 UNIT mm

DESIGNED: Kwon mi young
DRAWN: CHOSANG UK
CHECKED: CHOSANG UK
APPROVED: CHOSANG UK

DWG SIZE: A2
DWG No.: 10000305
SHEET 1 OF 1